

MagCore® Nucleic Acid Extraction Kits

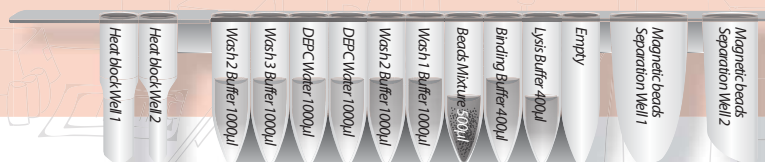


For total RNA extraction from cultured cells

MagCore® Total RNA Cultured Cells Kit is designed for purifying total RNA from up to 1×10^6 cultured cells using MagCore® instrument. DNase I is optional for eliminating possible DNA contaminants during the isolation of RNA.

610

MagCore® Total RNA Cultured Cells Kit



Features

1. High quality RNA ready-to-use for downstream applications
2. No phenol or chloroform involved.
3. Pure RNA: A_{260}/A_{280} ratio between 1.9 to 2.2
4. Optional DNase I for eliminating potential DNA contaminants.

Applications

Purified RNA ready to use in downstream applications such as:

1. PCR
2. Real-time PCR
3. Microarray target preparation
4. Northern blotting
5. NGS analysis

Performance

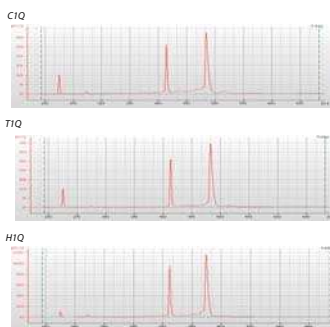
Analysis of RNA by Agilent Bioanalyzer 2100

	Sample name	Sample volume (μl)	RNA conc. (ng/μl)	RNA quantity (μg)	OD _{260/280} Ratio	Bioanalyzer chip lane location	28S/18S Ratio	RIN
#1	C1Q	200μl	69.72	11.8	2.07	1	2.1	9.8
#2	C1	200μl	84.98	14.4	2.03	2	1.4	9.0
#3	T1Q	200μl	73.05	12.4	2.00	3	2.1	10.0
#4	T1	200μl	72.58	12.3	2.00	4	1.8	9.2
#5	H1Q	200μl	177.19	30.1	2.05	5	1.9	10.0
#6	H1	200μl	194.62	33.0	2.06	6	1.7	9.2

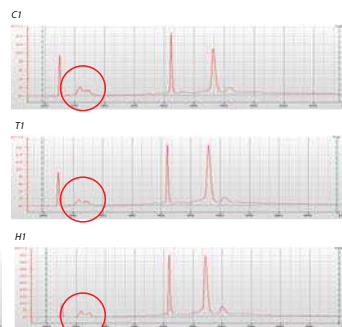
Comparison of RNA by Agilent bioanalyzer 2100. Cultured cells of three cell lines (C1, T1 and H1) were used for RNA purification using either the MagCore Total RNA Cultured Cells Kit or Brand Q manual whole blood RNA kit. It is shown that the MagCore Total RNA Cultured Cells Kit can extract RNA of various sizes such as mRNA, ribosomal RNA even microRNA (miRNA) and small interfering RNA (siRNA).

Bioanalyzer electropherogram

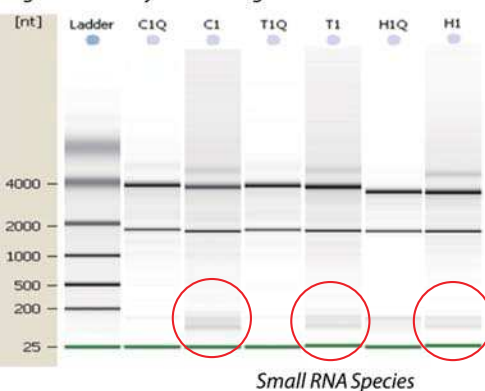
Supplier Q



MagCore®



Agilent Bioanalyzer Gel Image



MagCore® Automated Nucleic Acid Kits Specification

MagCore® Super/HF16 Plus/Plus II					MagCore® HF16/Compact/HF48			
Cartridge Code	Cat No.	Cat No.	Cat No.	Running Time	Cat No.	Cat No.	Cat No.	Running Time
	36 preps	72preps	96preps		36 preps	72preps	96preps	
<div>610</div> <div>MagCore® Total RNA Cultured Cells Kit</div> <div>For Cultured cell samples (up to 1 x10⁶ cells)</div> <div>Contents: Pre-Filled Cartridges, RB Buffer, Disposable Tip & Holder Sets, Sample Tubes, Elution Tubes</div> <div>Shelf life: 18 months</div>								
MRC-01		MRC-02	52min (without DNase I treatment; starting volume: 200 μl) 79min (with DNase I treatment; starting volume: 200 μl) * optical detection is not provided	MRC-01		MRC-02	42min (without DNase I treatment; starting volume: 200 μl) 72min (with DNase I treatment; starting volume: 200 μl) (Applicable models: HF16, Compact)	

Enzyme Selection Guide

Product	Contents	Cat. No.
Proteinase K Set	11 mg Proteinase K, 1.25 ml PK Storage Buffer	PK011
DNase I Set	For 36 reactions RNase-Free DNase I (Lyophilized): 1500 Kunitz units x 1 vial, 1 ml RNase-Free Water x 1, 15 ml DNase I Reaction Buffer	DN036
	For 96 reactions RNase-Free DNase I (Lyophilized): 1500 Kunitz units x 2 vial, 1 ml RNase-Free Water x 2, 30 ml DNase I Reaction Buffer	DN096



RBC Bioscience Corp.
www.rbcbioscience.com
info@rbcbioscience.com